

VEGETATION MANAGEMENT...

We all enjoy a big shade tree, a tire swing and a place to carve our sweetheart's initials. Like you, Meriwether Lewis values trees for their beauty, environmental benefits and community contributions, but we also respect the danger they can create when crossing paths with the electric grid.

Managing vegetation is required as part of the National Electrical Safety Code, and MLEC approaches it in an environmentally conscious way. A well-maintained path around utility poles can provide a good habitat for native grasses, insects, birds, flowering plants, etc. It also provides an open, safer environment for linemen to work and to keep your power and broadband on.

.....
.....
.....



Questions?

Hickman County: 931-729-3558

Lewis County: 931-796-3116

Perry County: 931-589-2151

Humphreys County: 931-296-2581

Houston County: 931-289-3311

Email: power@mlec.com

Josh McDonald

System Vegetation Manager
josh.mcdonald@mlec.com

Matt Kirk

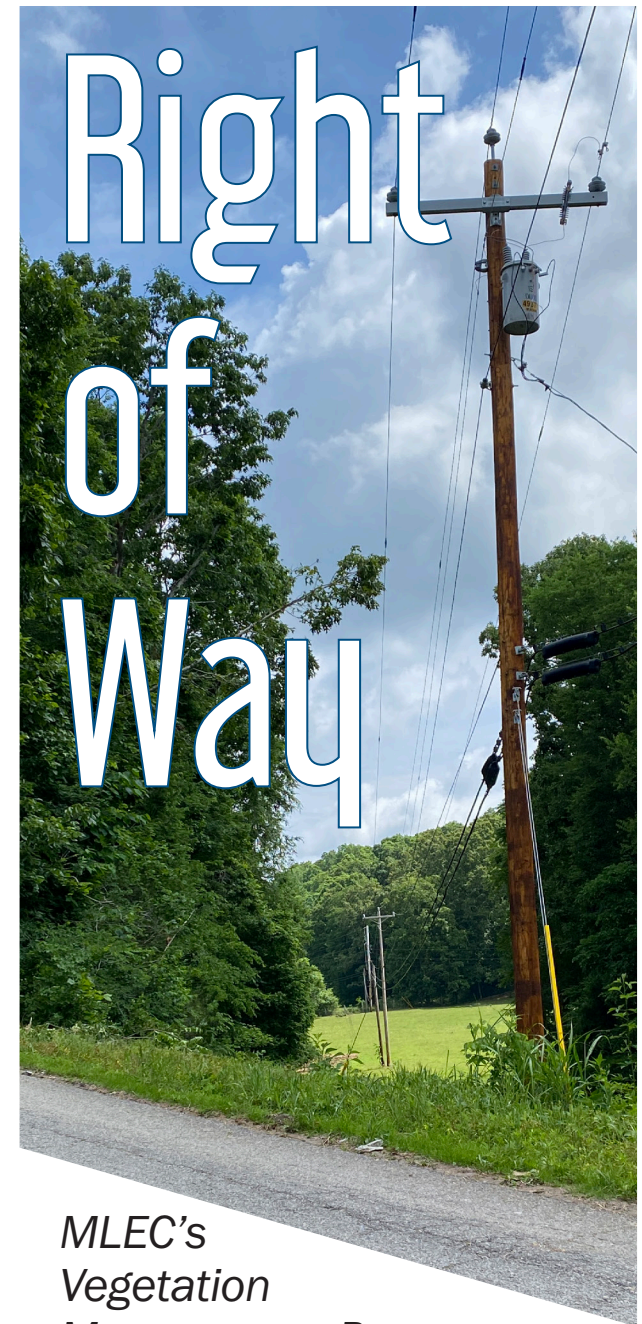
Right-of-Way Coordinator
matthew.kirk@mlec.com

 [@MeriwetherLewisEC](https://www.facebook.com/MeriwetherLewisEC)

 [@MLECPower](https://twitter.com/MLECPower)

 [@meriwetherlewisec](https://www.instagram.com/meriwetherlewisec)

4/2026



*MLEC's
Vegetation
Management Program*



...AND WHY IT MATTERS TO YOU



SAFETY

Ensuring members and lineworkers get home safely every day is a priority for MLEC. Vegetation never stops growing and when trees touch power lines, it can lead to serious or fatal injuries. Children climbing trees, people using ladders or farm equipment, and lineworkers can all be at risk.

RELIABILITY

Did you know that one in four power outages are caused by trees and vegetation touching power lines or equipment? The number increases when factoring in storms, but if MLEC maintains a 40-foot right of way (20 feet on all sides of the power line), outage numbers and length decrease.

SAVINGS

A clear right of way means members and the cooperative save on unnecessary expenses and outage time. When a tree falls, it can bring down poles and lines that deliver your power and broadband. MLEC must replace the pole as well as any transformers, lines and other damaged, connected equipment. Keeping the path clear reduces costly, emergency repairs.

OUR PLAN

MLEC uses a mixture of trimming, cutting and spraying to achieve reliability, safety and savings. Our practices follow the International Society of Arboriculture and the recommended guidelines for good tree health by the National Arbor Day Foundation. Contracted crews are also licensed and utilize EPA-approved sprays to avoid environmental issues.



Tentative 2026 Schedule

Trimming will continue in Humphreys County in 2026 before moving into Hickman and Perry counties. See your April issue of *The Tennessee Magazine* or our website for more details.

Spraying is scheduled this summer for all of Houston, Humphreys, and Perry counties. A limited number of members in Hickman County at Pleasantville, Only, and Bucksport served by the Linden and Lobelville substations will also be included.

For special situations where the property owner would like to personally invest and maintain the right of way according to standards, options are available instead of **spraying**.

If interested, contact MLEC as soon as possible. The necessary paperwork must be filed with MLEC by **May 15, 2026**.

Check your local media and MLEC's online platforms for updates to the schedule.