

CAREERS cont.



MARKETING & PUBLIC RELATIONS

The cooperative's storytellers, marketing and communications professionals tackle a variety of responsibilities, including reputation management, social media and media relations as well as energy audits, advice and tips.

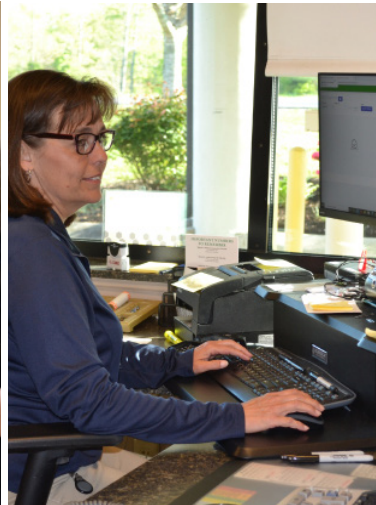
Communications Coordinator
Energy Specialist
Marketing Coordinator



HUMAN RESOURCES

HR pros help engage with co-op employees and manage multiple responsibilities, including benefits administration, reporting, recruiting, employee training and leadership.

HR Director
Employee Services Assistant
Human Resources Generalist



MEMBER SERVICE

Member service representatives are the initial point of contact for our consumers. They answer phones, assist new members, solve problems and collect payments. Schedulers help establish broadband service and coordinate installations.

Member Service Representative
Schedulers

CAREER OPPORTUNITIES AT MERIWETHER LEWIS!

Visit
www.mlec.com/mlec-careers.

Find us on social media!

 facebook.com/MeriwetherLewisEC

 twitter.com/MLECPower

10/2024



There are many ways to earn a paycheck, but some are more rewarding than others.



5 REASONS TO CONSIDER AN ELECTRIC COOPERATIVE CAREER

1) A Paycheck with a Purpose

An electric co-op is a different kind of business. We're built and led by the members we serve, not some distant shareholder. While we provide the affordable, reliable energy that is critical to the health and prosperity of our community, we do much more.

2) We're Local

We serve our neighbors, family and friends. We make sustainable investments in the community we share. We support local businesses and organizations, and we create jobs and economic activity here at home.

3) We're Looking Ahead

At an electric cooperative, you are part of a team that creates innovative energy solutions for the people in our community.

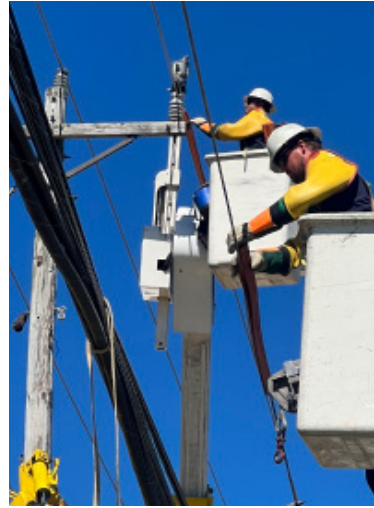
4) We Put People First

We respect diversity and openness—it makes us stronger. We hold ourselves to the highest standards of professionalism and integrity, while still maintaining a close-knit, family-friendly working environment.

5) We're Invested in You

We support your professional growth, development and success with training opportunities. Co-op employees deliver a valuable service to our communities, and they're rewarded for that dedication with competitive pay, insurance and wellness plans, and outstanding retirement benefits.

MERIWETHER LEWIS CAREERS



LINeworker & OPERATIONS

These professionals keep the power on. They not only construct, replace and maintain the electric lines - they get the power back on when storms or other disasters strike.

Journey Lineworker
Apprentice Lineworker
Meter Technician
District Manager



ENGINEERING & TECHNOLOGY

Engineers are detail-oriented problem solvers. Using state-of-the-art equipment, they design, plan and monitor transmission, distribution and service lines.

Engineering Technician
Electrical Technician
Electrical Engineer
Power Distribution Technician
GIS Administration



INFO TECHNOLOGY & SUPPORT SRVCS.

IT pros ensure technology functions efficiently, evaluate hardware and software needs, manage cybersecurity and maintain communications systems. Support services help us run smoothly and safely.

IT Administrator
Mechanic
Safety & Loss Control
Purchasing



FINANCE & ACCOUNTING

Finance professionals ensure co-ops can build and maintain infrastructure to keep the lights on. Duties include risk management, forecasting and overall financial management.

General Accountant/Plant
Payroll & Benefits
General Ledger & Financial
Billing Functions



MERIWETHER LEWIS CONNECT

MLConnect brings broadband to our rural hometowns - and job opportunities in a fast-changing, ever growing technology.

Install/Repair Technician
Design Engineer
Network Technician
Network Engineer
Splicer
Line Technician

Electric co-ops provide career opportunities that are close to home but far from ordinary. If you are looking for an opportunity to provide for your family and serve your community, consider a co-op career.